

RARE OPPORTUNITY!

SINGLE MEDICAL/OFFICE SPACE AVAILABLE DOWNTOWN WESTPORT



26 Imperial Ave

- **Perfect for a Psychiatrist/Psychologist**
- **\$500/Month Gross**
- **Ample & Easily Accessible Parking**
- **Shared Reception Area/Waiting Room**
- **Quiet/Peaceful Environment**
- **Close Proximity to I-95, Merritt Parkway, Metro- North, and all important amenities**

Contact Exclusive Agents

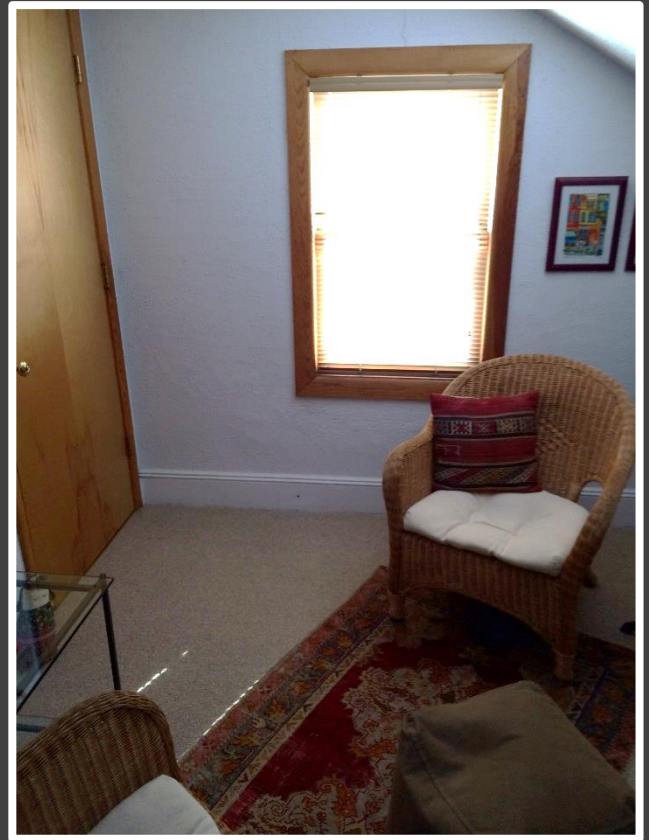
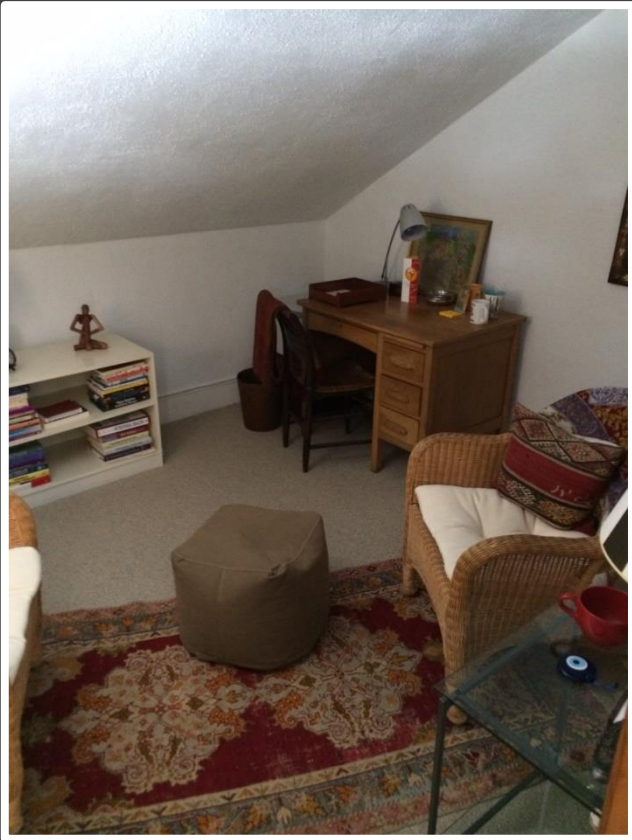
Dale Thomas or Christopher Maglione

(203)913-4345

(203)858-9701

dthomas@johndhastings.com

cmaglione@johndhastings.com



2nd Floor Office



26 Imperial Ave- Main Entrance



26 Imperial Ave- Northern View From Imperial Ave



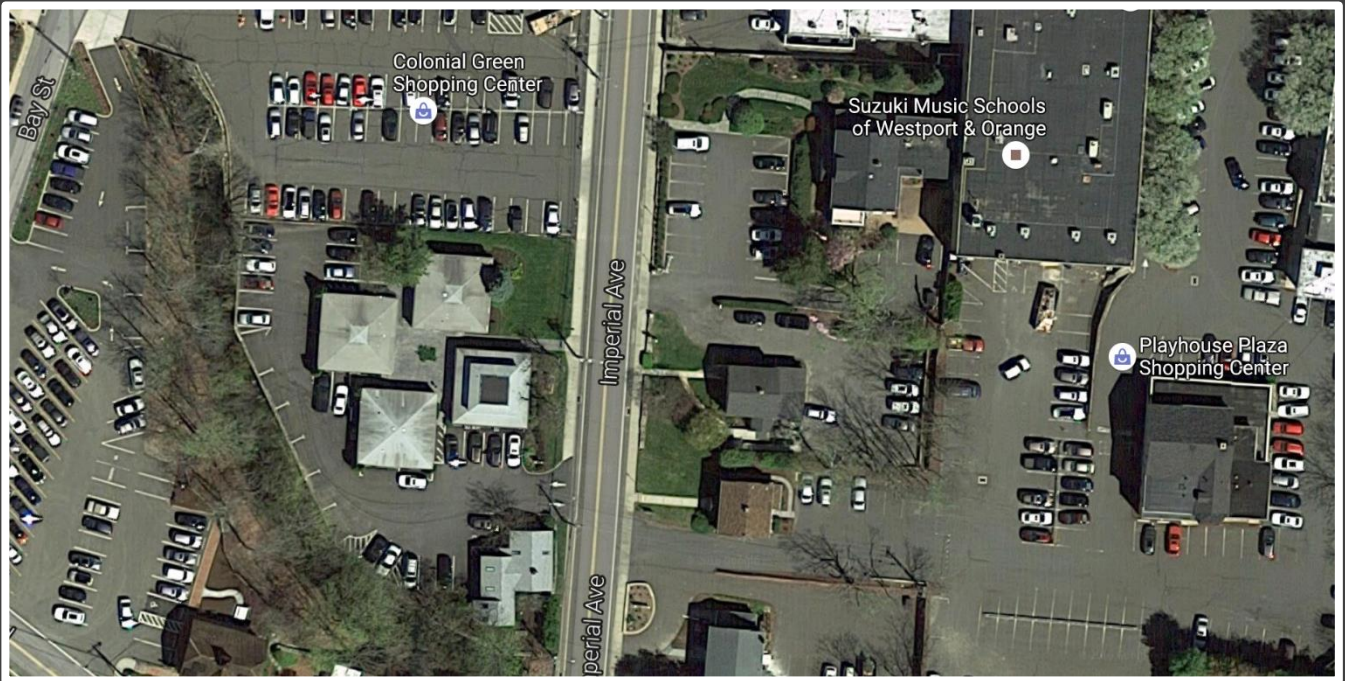
26 Imperial Ave- Southern View From Imperial Ave



26 Imperial Ave- Easily Accessible Parking Area



26 Imperial Ave- Quiet & Peaceful Surroundings



26 Imperial Ave/Downtown Westport, CT- Aerial Views

