

EXCELLENT RETAIL OPPORTUNITY! WESTPORT, CONNECTICUT



1505 Post Road East

- **8,000+/-SF 1st floor Retail space**
- **\$50/S.F. NNN**
- **Free Standing Building**
- **Ample & Easily Accessible Parking**
- **Excellent Visibility**
- **Located on Lighted Corner of Post Road East & Maple Avenue**
- **Strong Demographics & Traffic Counts**

CONTACT EXCLUSIVE AGENT(S)

Peter Hastings Jr.
Cell: 203-856-9736

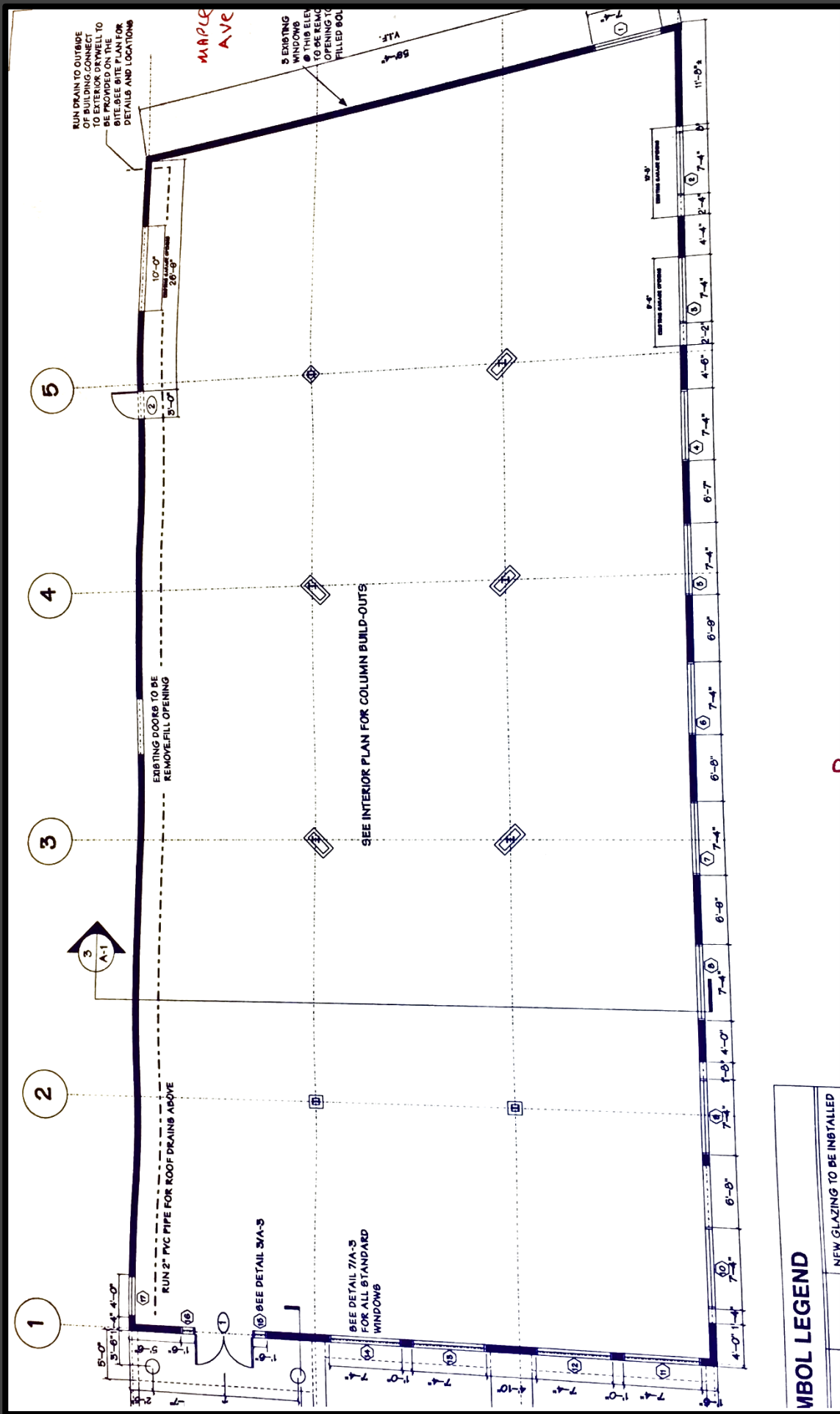
phastings@hastingsrealestate.com

Christopher Maglione
Cell: 203-858-9701

cmaglione@johndhastings.com







RUN DRAIN TO OUTSIDE OF BUILDING CONNECT TO EXISTING DRAIN TO BE PROVIDED. SEE SITE PLAN FOR DETAILS AND LOCATIONS

MAPLE AVE

EXISTING WINDOWS TO BE REMOVED. THIS ELEMENT TO BE REMOVED. OPENING TO BE FILLED WITH

5'-0" W.F.

5

4

3

2

1

2

3

4

5

EXISTING DOORS TO BE REMOVED. FILL OPENING

SEE INTERIOR PLAN FOR COLUMN BUILD-OUTS

5 A-1

RUN 2" PVC PIPE FOR ROOF DRAINS ABOVE

SEE DETAIL 3/A-3

SEE DETAIL 7/A-3 FOR ALL STANDARD WINDOWS

EXISTING WINDOW

EXISTING WINDOW

11'-0"

7'-4"

4'-4"

2'-2"

7'-4"

4'-8"

7'-4"

6'-7"

7'-4"

6'-8"

7'-4"

6'-8"

7'-4"

6'-8"

7'-4"

6'-8"

7'-4"

6'-8"

7'-4"

4'-0"

7'-4"

6'-8"

7'-4"

6'-8"

7'-4"

4'-0"

WBOL LEGEND
NEW GLAZING TO BE INSTALLED

