

UNIQUE RETAIL/OFFICE/FLEX SPACE DOWNTOWN WESTPORT LOCATION



21 Jesup Road

- This unique 1,454 SF 2nd floor commercial space, comprised of 1,107 SF with an additional 347 SF mezzanine area, has a private entrance and a \$3,800/Month Gross + Utilities asking rent.
- Open bright space with high ceilings, hardwood floors, kitchen, full bathroom and river views.
- Ideal for creative type uses (i.e. photographers, architects, artists, etc.)
- Located in the heart of the Downtown area- overlooking the Jesup Green and in-close-proximity to all shops/amenities/all day parking.

Contact Exclusive Agents

Chris Maglione
(203)858-9701

cmaglione@johndhastings.com

Dale Thomas
(203)913-4345

dthomas@johndhastings.com

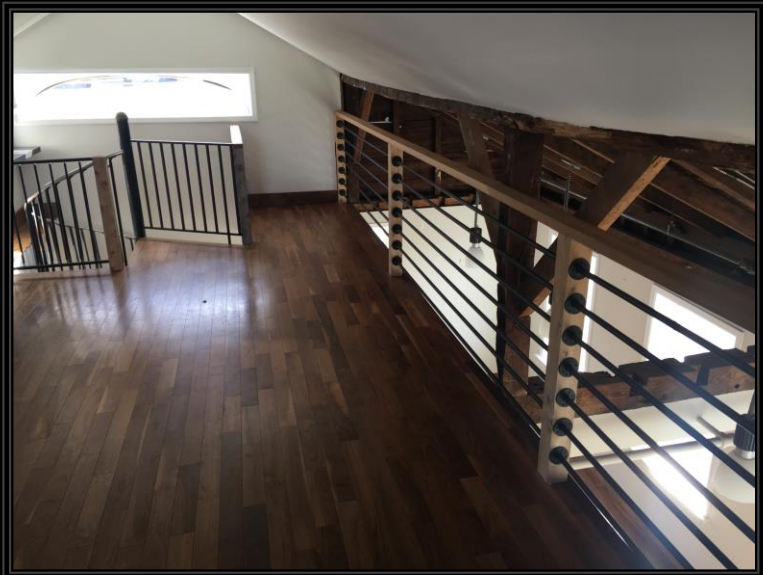
Mark Holod
(203)856-3893

mholod@johndhastings.com

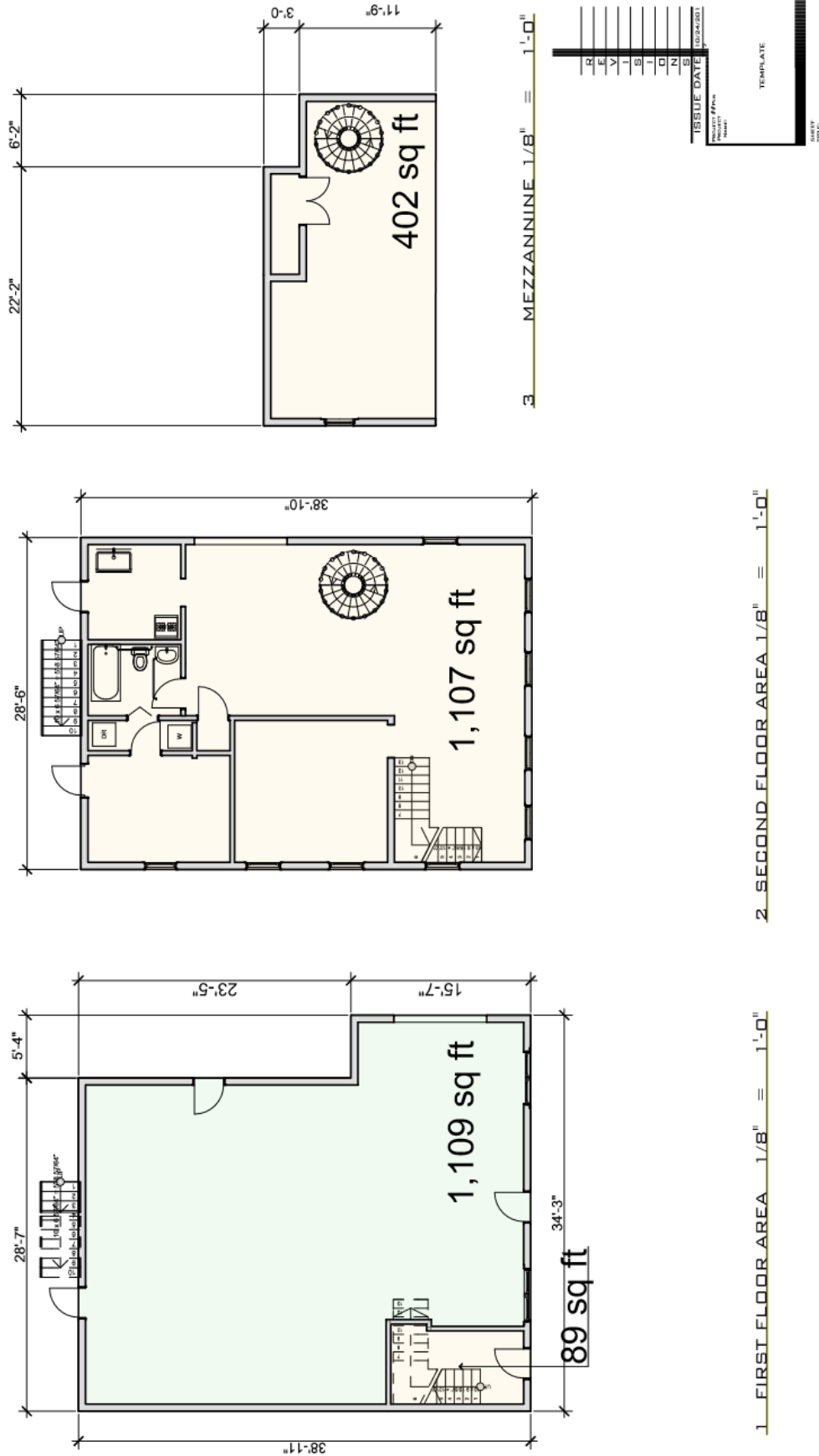
Pete Green
(203)246-0972

pgreen@johndhastings.com

SECOND FLOOR OFFICE SPACE & VIEWS



21 & 23 JESUP ROAD FLOOR PLANS



AERIAL VIEWS

