

THE COOLEST OFFICE SPACE **DOWNTOWN WESTPORT LOCATION**



21 Jesup Road

- This unique 1,454 SF 2nd floor office space, comprised of 1,107 SF with an additional 347 SF mezzanine area, has a private entrance and a \$3,600/Month Gross + Utilities asking rent.
- Open bright space with high ceilings, hardwood floors, kitchen, full bathroom and river views.
- Ideal for creative type uses (i.e. photographers, architects, artists, etc.) & perfect for a home/office business.
- Located in the heart of the Downtown area- overlooking the Jesup Green and in-close-proximity to all shops/amenities/all day parking.

Contact Exclusive Agents

Chris Maglione
(203)858-9701

cmaglione@johndhastings.com

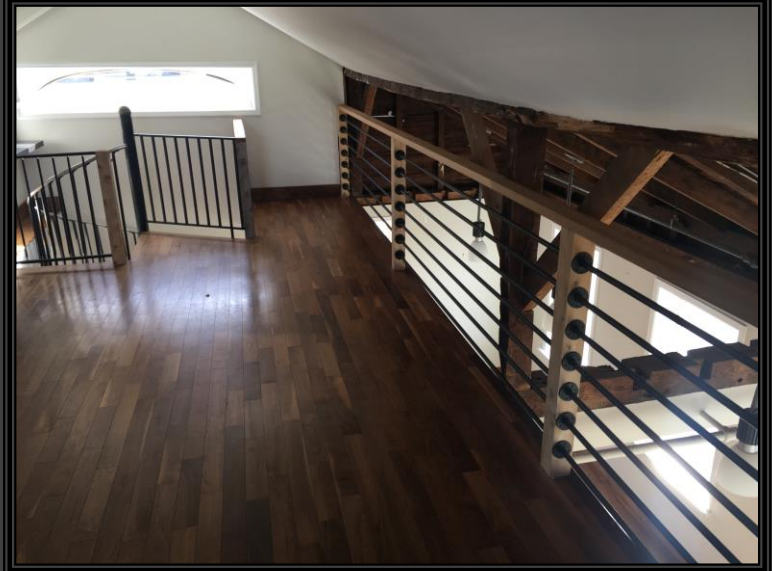
Dale Thomas
(203)913-4345

dthomas@johndhastings.com

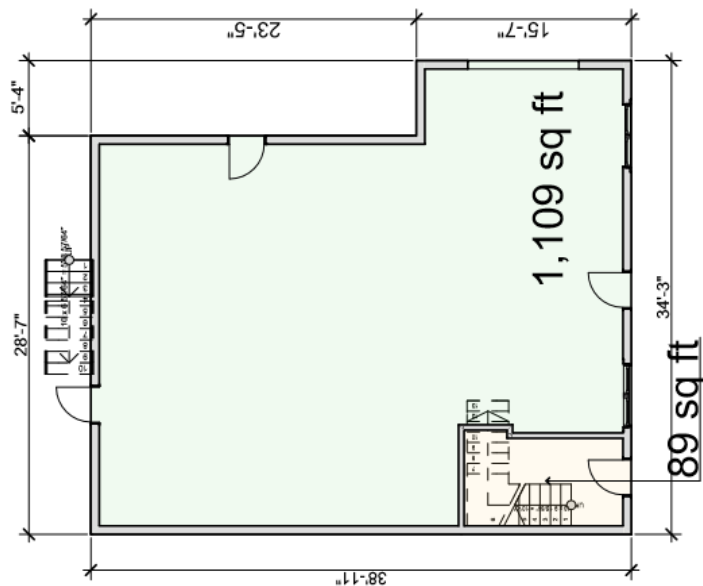
Mark Holod
(203)856-3893

mholod@johndhastings.com

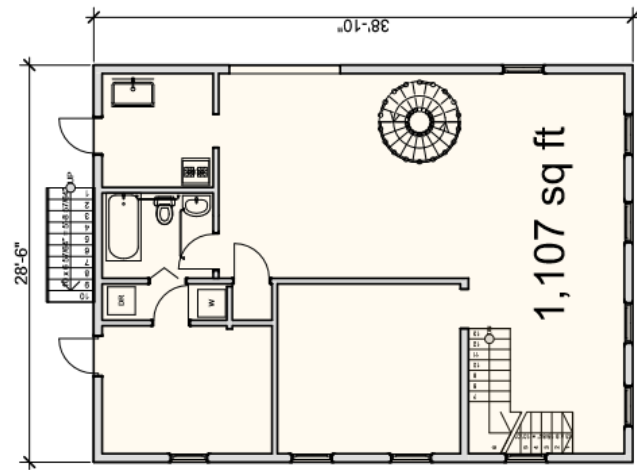
SECOND FLOOR OFFICE SPACE & VIEWS



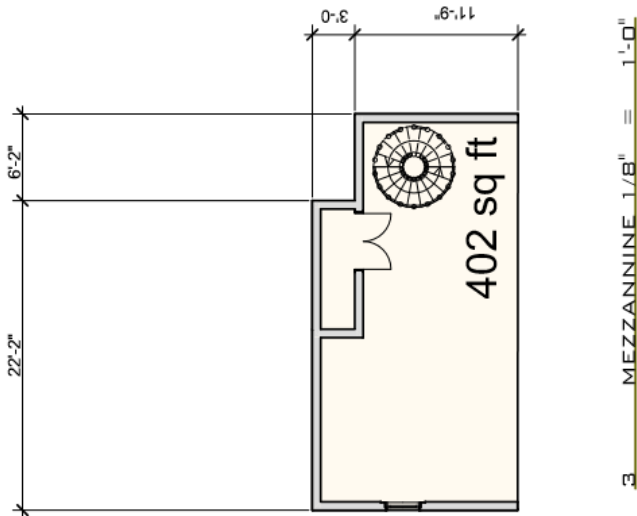
21 & 23 JESUP ROAD FLOOR PLANS



1 FIRST FLOOR AREA 1/8" = 1'-0"



2 SECOND FLOOR AREA 1/8" = 1'-0"



3 MEZZANINE 1/8" = 1'-0"

REVISION	DATE	BY
1	03/24/2011	SB
2		
3		
4		
5		
6		
7		
8		
9		
10		
11		
12		
13		
14		
15		
16		
17		
18		
19		
20		
21		
22		
23		
24		
25		
26		
27		
28		
29		
30		
31		
32		
33		
34		
35		
36		
37		
38		
39		
40		
41		
42		
43		
44		
45		
46		
47		
48		
49		
50		
51		
52		
53		
54		
55		
56		
57		
58		
59		
60		
61		
62		
63		
64		
65		
66		
67		
68		
69		
70		
71		
72		
73		
74		
75		
76		
77		
78		
79		
80		
81		
82		
83		
84		
85		
86		
87		
88		
89		
90		
91		
92		
93		
94		
95		
96		
97		
98		
99		
100		



21 JESUP ROAD
WESTPORT, CT 06880
P: 203.557.0803

FREDERICK WILLIAM HOAG
ARCHITECT

21 JESUP FLOOR AREAS

AD

AERIAL VIEWS

